



Sea View, Ashington

£700 Per Calendar Month

 2  2  2  C

RICHARDSONS 

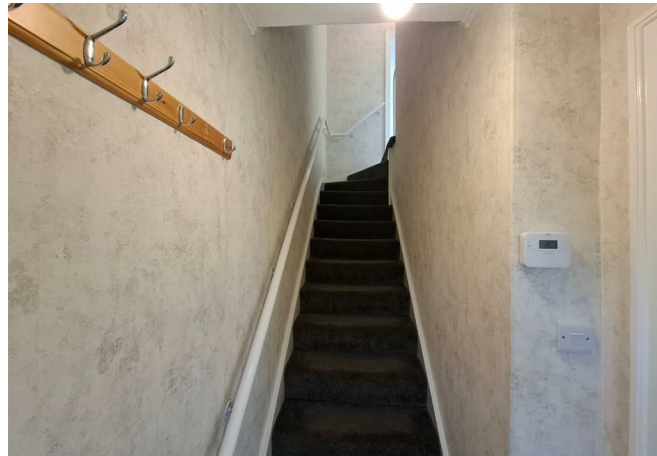


Sea View

Ashington, NE63 0XH

- Terraced House
- Modern Kitchen
- Sizeable Garden
- Available Now
- Two Bedrooms
- 5 Minute walk to River Wansbeck
- Modern Bathroom
- Epc Rating D

£700 Per Calendar Month

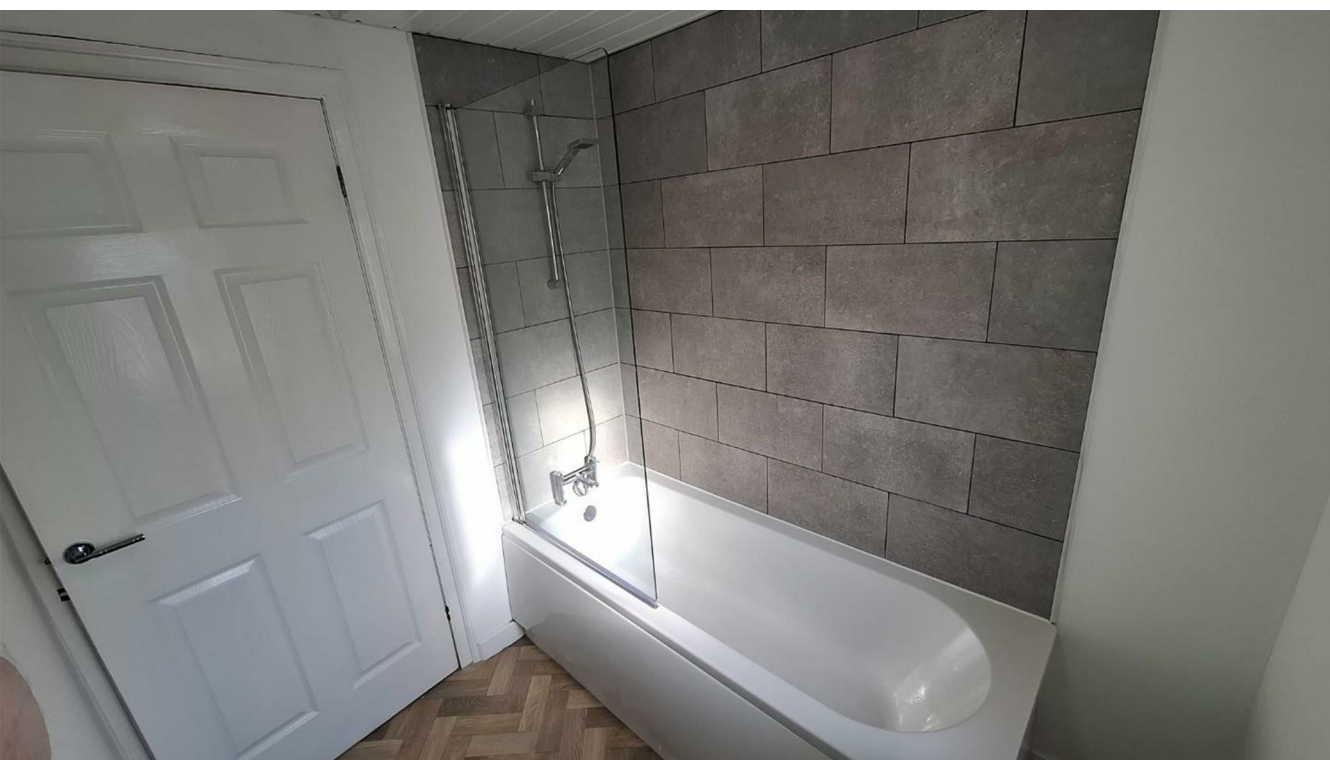


A recently refurbished 2-bedroom property located in the popular Sea View area of Ashington. This modern home features a stylish new kitchen and contemporary bathroom, offering comfortable living in a quiet residential area.

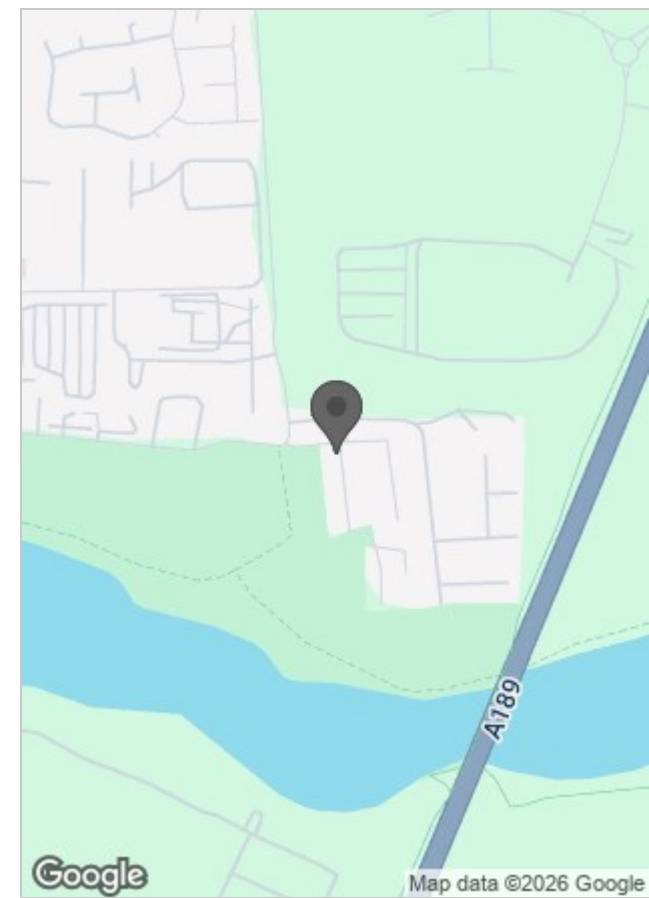
The property benefits from two well-sized bedrooms, a good-sized private garden, and is just a 5-minute walk from the River Wansbeck, perfect for scenic walks and outdoor enjoyment.


Ideally situated close to local amenities and transport links, this property is available now and ready to move into.

Council Tax - A
Deposit £807







Energy Efficiency Rating		
	Current	Potential
<i>Very energy efficient - lower running costs</i>		
(82 plus) A		90
(81-91) B		
(69-80) C	76	
(55-68) D		
(39-54) E		
(21-38) F		
(1-20) G		
<i>Not energy efficient - higher running costs</i>		
England & Wales	EU Directive 2002/91/EC 	

Viewing

For further information or to arrange a viewing please contact our North Shields office on 01912903770

The particulars are set out as a general outline only for the guidance of intended purchasers or lessees, and do not constitute, any part of a contract. Nothing in these particulars shall be deemed to be a statement that the property is in good structural condition or otherwise nor that any of the services, appliances, equipment or facilities are in good working order. Purchasers should satisfy themselves of this prior to purchasing.